



MA Center for Health Information & Analysis

Case Mix User Workgroup

July 26, 2016

Agenda



- Announcements
- Presentation: Why did CHIA lift the limit on number of diagnosis and procedure codes in FY15 Case Mix?
- Q&A

Announcement



- New CHIA Executive Director – Ray Campbell
 - Commissioner (Acting E.D.) at the GIC and former CEO of MA Health Data Consortium
 - Will be starting August 1st
- Steve McCabe, CHIA's current Deputy Executive Director of Health Analytics and Finance has been the Interim Executive Director since Aron Boros left in June

Case Mix FY15 Release




- We are accepting applications for FY15 Case Mix data NOW
- Inpatient Data is available NOW
 - Emergency Department ready in late August
 - Outpatient Observation ready in early September
- Apply for all files now and we will fulfill them as they become available.
- FY15 Case Mix data in LDS format
- FY04-FY14 available in old “Levels” format (can request on the same application form)
- FY15 Release Documentation should be posted soon

Case Mix Webpage

CHIA.

<http://www.chiamass.gov/case-mix-data/>



MA APCD HEALTH INFORMATION AND ANALYSIS

CHIA DATA

ABOUT CHIA

Information for Data Submitters

[CHIA Data](#) » [Case Mix Data](#)

Case Mix Data

The Massachusetts Acute Hospital Case Mix Database is a database comprised of:

- Hospital Inpatient Discharge Database (HIDD)
- Outpatient Observation Database (OOD)
- Emergency Department Database (ED)

Acute Hospital Case Mix data includes case specific, diagnostic discharge data that describe socio-demographic characteristics of the patient, the medical reason for the admission, treatment and services provided to the patient, the duration and status of the patient's stay in the hospital, and the full, undiscounted total and service-specific charges billed by the hospital to the general public.

This patient-level data supports the analyses of such issues as preventable hospitalizations, hospital market analysis, alternative care settings, the patient care continuum, and comparative costs and outcomes in acute care hospitals. To learn more about how Case Mix data is used, view recent [applications](#) for Case Mix data that CHIA has received from researchers and other entities.

Case Mix data includes hospital inpatient data, outpatient observation data, and hospital outpatient emergency department data.

Inpatient Discharge Database

The Hospital Inpatient Discharge Database (HIDD) contains comprehensive patient-level information including socio-demographics, clinical data, and charge data. It is used to establish reasonable and adequate rates, to enable hospitals to be grouped for comparing costs, to assist in the formulation of health care delivery and financing policy, and to assist in the provision and purchase of health care services. For more information about this data, please see the [documentation manual](#).

Outpatient Observation Database

The Outpatient Hospital Observation Discharge Database (OOD) contains

Case Mix Overview Information	
<ul style="list-style-type: none">• Case Mix White Paper (Updated June 2016)• MA APCD and Case Mix User Workgroups• Data Release Committee	
Steps to Request the Data	
Government entities	Non-Government entities
Case Mix Current Release Documentation	
<ul style="list-style-type: none">• HIDD FY15 (PDF) Word (Coming Soon!)• OOD FY15 (PDF) Word (Coming Soon!)• ED FY15 (PDF) Word (Coming Soon!)• FY15 Case Mix Data Elements List (PDF) Word (Coming Soon!)	
Case Mix Documentation Archive	
User Support / Contact Us	
MA APCD / Case Mix User Workgroup	apcd.data@state.ma.us
Information for Data Submitters	

Revised Application Forms



Posted here: <http://www.chiamass.gov/case-mix-application-documents/>



[CHIA Data](#) » [Case Mix Application Documents](#)

Case Mix Application Documents

Case Mix Fee Schedule Update

- [Administrative Bulletin 15-07: 957 CMR 5:00: Health Care Claims, Case Mix and Charge Data Release Procedures \(PDF\)](#) | [Word](#)
(Effective June 1, 2015)

Application Materials for Government Entities Requesting Case Mix Data:

- [Case Mix Application Form - Government Entities \(PDF\)](#) | [Word](#)
- [Governmental Entity Data Use Agreement \(PDF\)](#) | [Word](#)

Application Materials for Non-Government Entities Requesting Case Mix Data:

- [Fee Remittance or Fee Waiver Request Form \(PDF\)](#) | [Word](#)
- [Case Mix Request Form: Non-Government \(PDF\)](#) | [Word](#)
- [Data Management Plan with Minimum Security Requirements \(PDF\)](#) | [Word](#)
- [Data Use Agreement \(PDF\)](#) | [Word](#)

PLEASE NOTE: Important Information for Non-Governmental Requests for [APCD](#) and [Case Mix Data \(PDF\)](#) | [Word](#)

Note: APCD application documents are located [here](#).

MA APCD Release 5.0



- Apply for data NOW – application forms are posted on the APCD website:
<http://www.chiamass.gov/application-documents/>
- Data should be ready to go out the door by July 31st
- Release documentation (release notes, full data specifications, etc.) will be posted over the next couple of weeks)
- No change in fees or fee waiver provisions with this release

MA APCD Release 5.0



Highlights of Release 5.0 Include:

- Data is available for dates of service from January 1, 2011 to December 31, 2015 as paid through March 31, 2016.
 - Data submitted to CHIA after March 2016 is not included in the files
- Comprehensive and recently updated data, including resubmissions from several large carriers
- Versioning for additional carriers beyond those carriers from APCD Release 4.0 (Blue Cross Blue Shield of Massachusetts, Tufts Health Plan, Harvard Pilgrim, and MassHealth)
 - A full list of Carriers versioned will be available closer to release implementation

MA APCD Release 5.0



Additional Highlights of Release 5.0:

- Government users may request both Level 2 and Level 3 elements, including MassHealth Enhanced Eligibility file and Benefit Plan file data
- Non-Government users may request groups of Level 2 data elements, as curated by CHIA into Limited Data Sets (same as Release 4.0).
- Some data elements have been derived by CHIA from submission data elements or have been added to the database to aid in versioning and identifying claims (e.g. Unique Record IDs and status flags).
 - More information will be available in the MA APCD Data Elements Reference Guide closer to the release date (will be posted with release documentation on the [APCD website](#))



QUESTIONS?



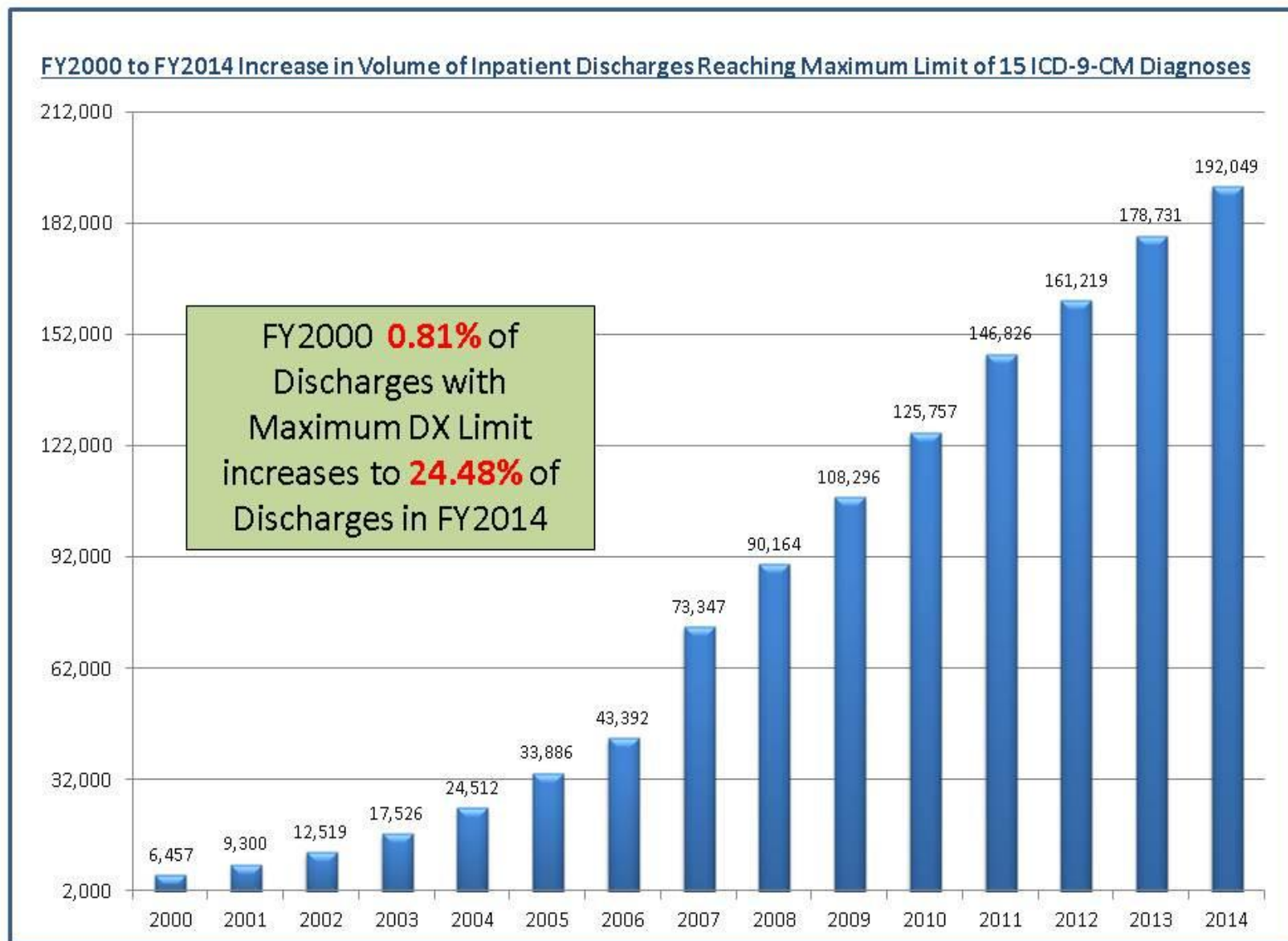
QUESTIONS SUBMITTED BY USERS

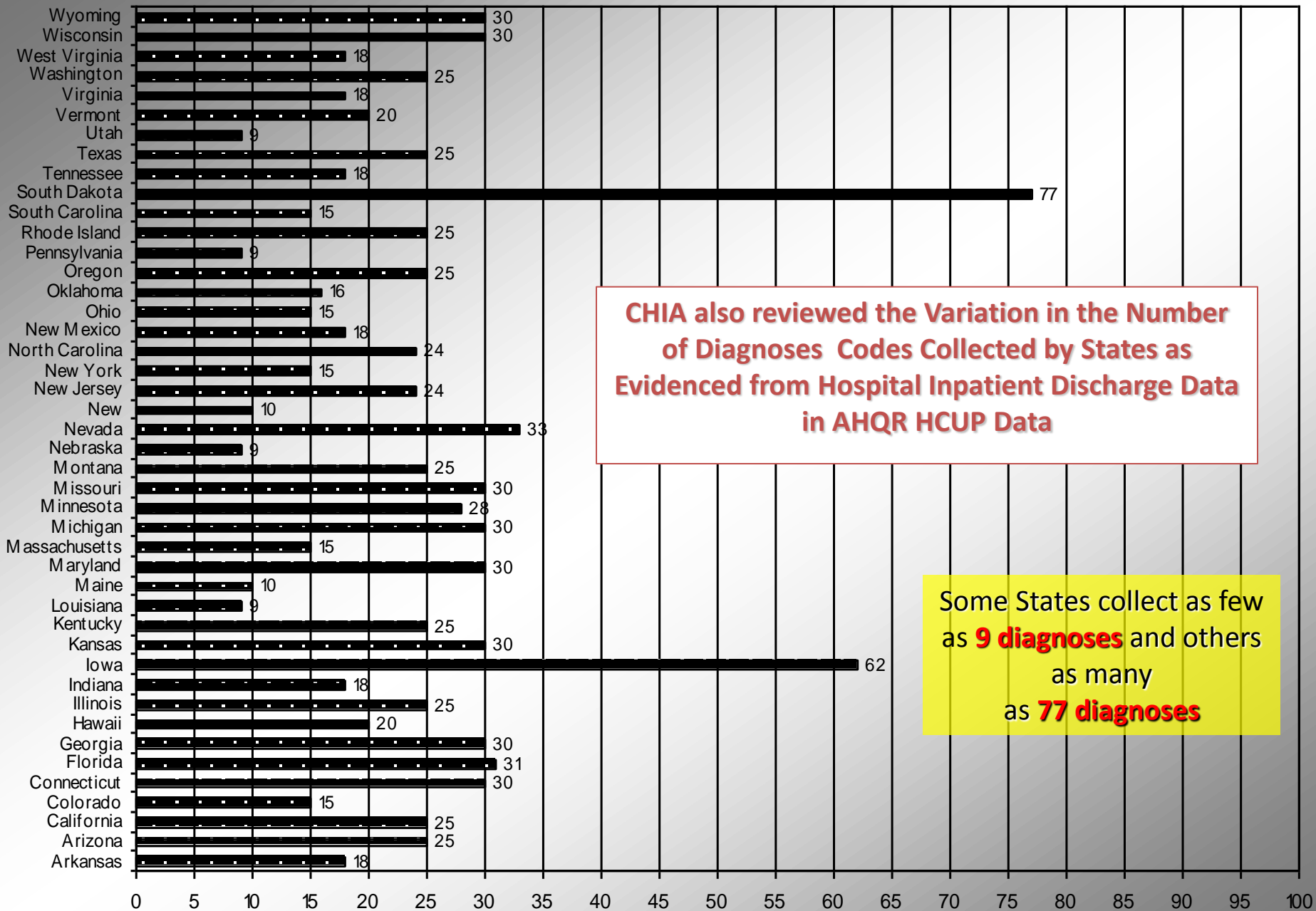


QUESTION:

In FY2015, why did CHIA lift the limit on number of diagnosis and procedure codes?

ANSWER: After reviewing a 15-year trend in percent of inpatient discharge records reaching the maximum limit, CHIA saw that in FY2014 (last year's data release), 24% of records reached the maximum limit.





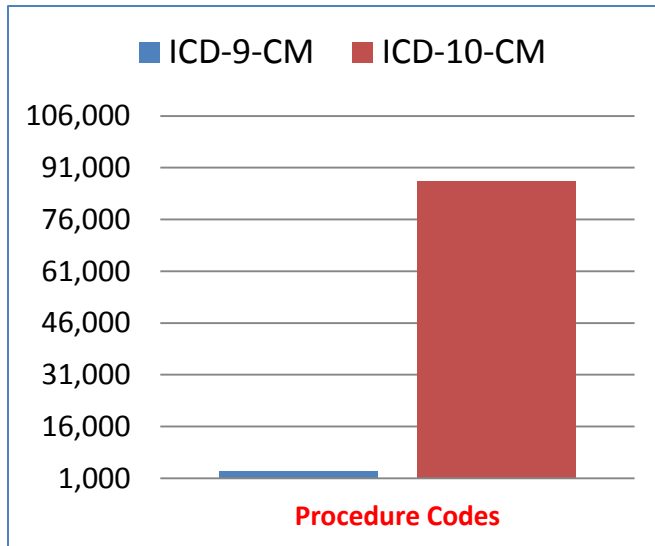
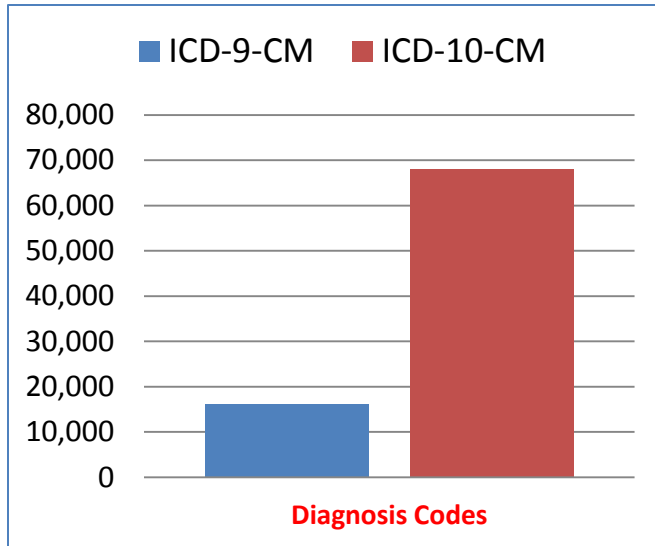
CHIA also reviewed the Variation in the Number of Diagnoses Codes Collected by States as Evidenced from Hospital Inpatient Discharge Data in AHQR HCUP Data

Some States collect as few as **9 diagnoses** and others as many as **77 diagnoses**

Number of Diagnoses Collected by in State Hospital Inpatient Discharge Data

QUESTION: In FY2015, why did CHIA lift the limit on number of diagnosis and procedure codes? (continued)

Comparison of ICD-9-CM to ICD-10-CM Code Volume



ANSWER (continued):

Even though the FY2015 data does not include ICD-10-CM data, next year's FY2016 release will.

The ICD-10-CM coding rubric includes significantly more codes than ICD-9-CM. **ICD-9-CM has approximately 14,000 diagnosis codes and 3,000 procedure codes in comparison to ICD-10-CM's 68,000 diagnosis codes and 87,000 procedure codes.** This increase substantiated the need to lift the limit on diagnosis and procedure codes.

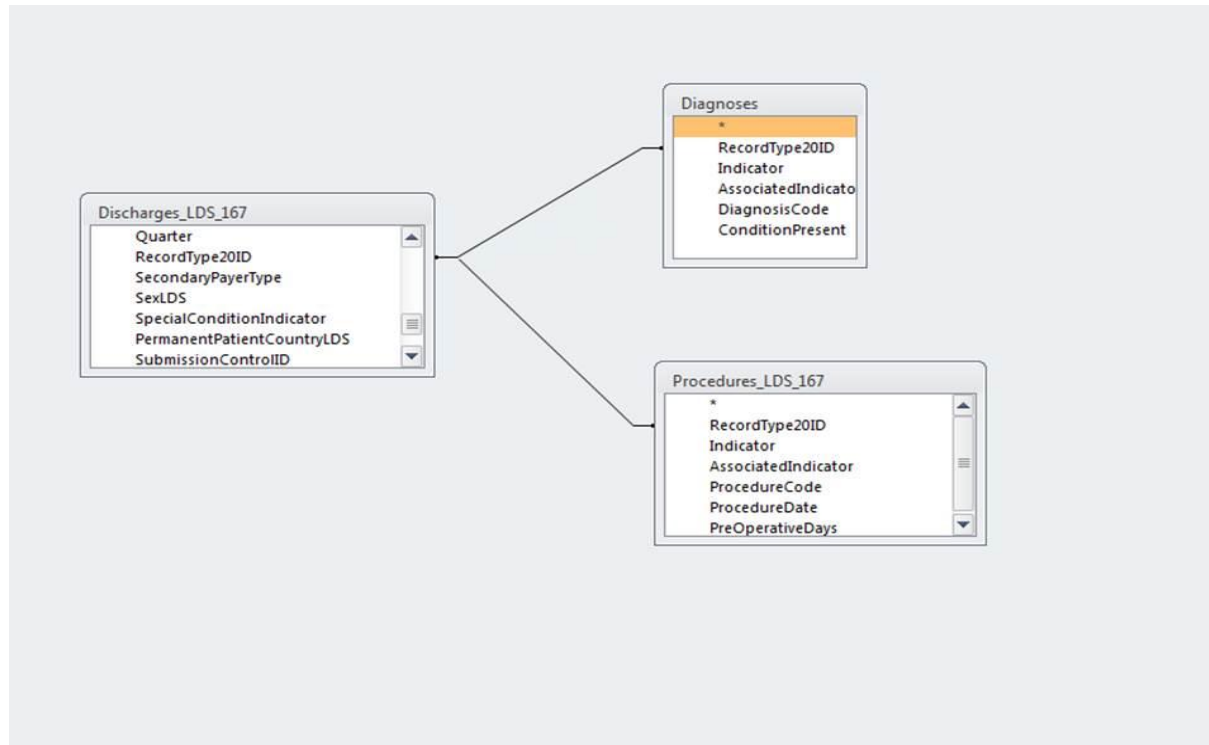
QUESTION: As a result of lifting the limit, did the volume of diagnosis codes in FY2015 data actually increase?

ANSWER: Yes, there was a 24.1% increase in diagnosis codes and a 23.9% increase in additional E-Codes not recorded in the dedicated E-Code Field.

	FY2014	FY2015	Percent Change
Number of Discharges	785,485	796,835	1.4%
Number of Total Diagnosis Codes	7,105,076	9,360,020	24.1%
Number of E-Codes in Dedicated and DX Fields	138,058	149,956	7.9%
Number of Additional E-Codes in DX Fields	61,806	81,192	23.9%

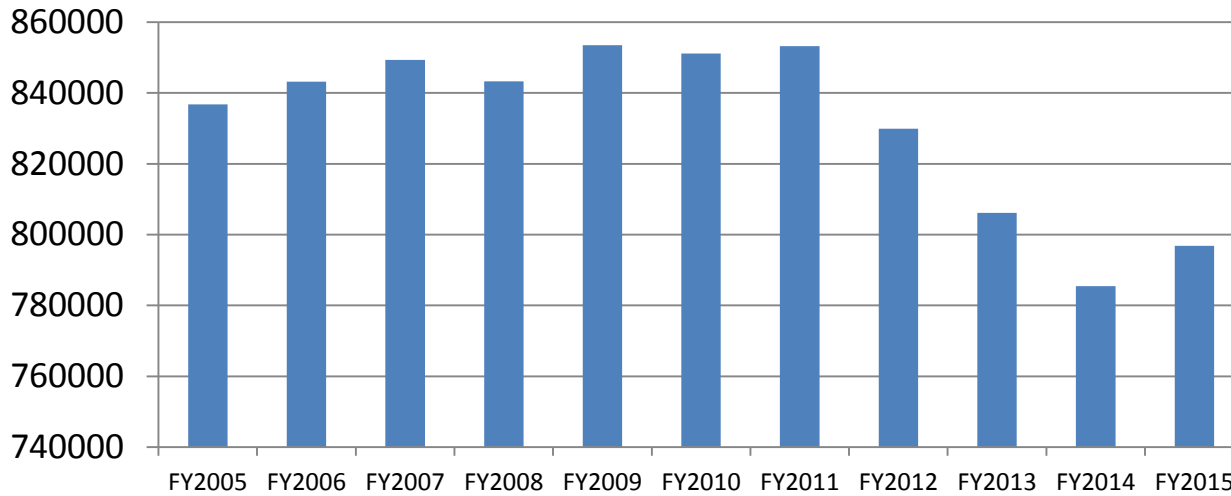
QUESTION: As a result of lifting the limit, has the release data file structure changed?

ANSWER: Yes, many of you are use to linking the main discharge data file by RecordType20ID as a one-to-many relationship to the DRG files and revenue code services files by RecordType20ID. The diagnosis codes file and procedure code file can also be linked to the main discharge data by RecordType20ID. See Example Below...



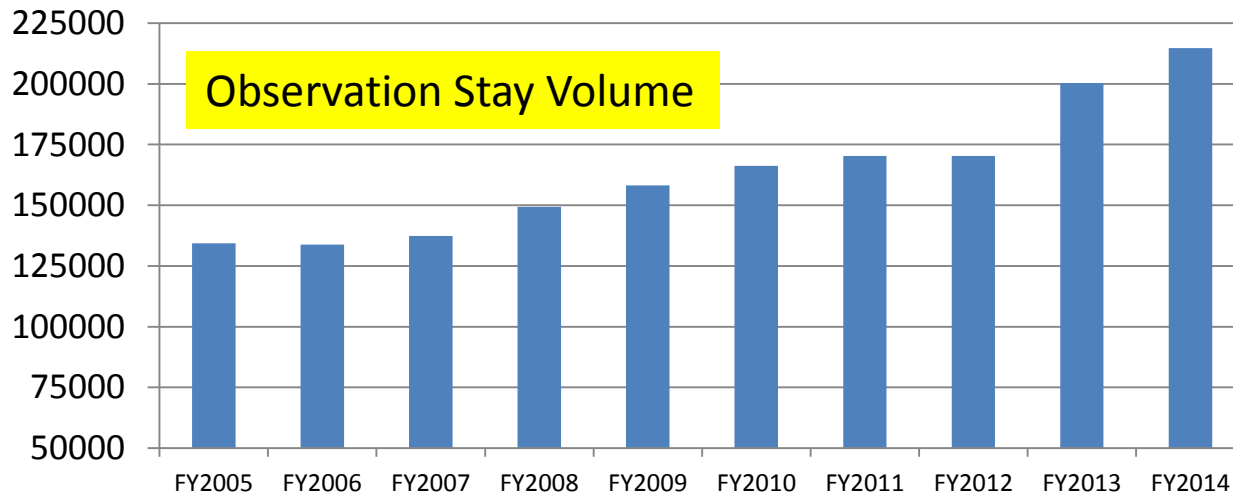
QUESTION: If I am applying for Inpatient Hospital Discharge Data to study septicemia, do you recommend that I also apply for observation stay data or are the observation stay cases not serious?

Inpatient Hospital Discharge Volume



ANSWER: Yes, the decrease in inpatient discharges has been paralleled by an increase in observation stay utilization and observation stay deaths. Some of those deaths do include septicemia cases.

Observation Stay Volume



Questions?



- Questions related to APCD :
(apcd.data@state.ma.us)
- Questions related to Case Mix:
(casemix.data@state.ma.us)

REMINDER: Please include your **IRBNet ID#**, if you currently have a project using CHIA data

Call for Topics and Presenters



If there is a **TOPIC** that you would like to see discussed at an MA APCD or Case Mix workgroup, contact Adam Tapply [adam.tapply@state.ma.us]

If you are interested in **PRESENTING** at an MA APCD or Case Mix workgroup, contact Adam Tapply [adam.tapply@state.ma.us]

You can present remotely from your own office, or in-person at CHIA.