

# Massachusetts Acute Hospital and Health System Financial Performance

Fiscal Year Data through March 31, 2022



## JUNE 2022

### About this Report

The Center for Health Information and Analysis (CHIA) reports quarterly on the financial performance of the Commonwealth's acute care hospitals, associated hospital health systems (HHS), and affiliated physician organizations. This report provides a quarterly update on profitability, liquidity, and solvency for the fiscal year-to-date period ending March 31, 2022.

Including HHS and affiliated physician organizations helps develop a more complete understanding of the financial performance of an acute hospital in the context of the larger health system within which it operates. This report includes 23 HHS required to submit data. Trinity Health provided hospital and affiliated physician organization data. Steward Health Care provided hospital data. Neither provided the required HHS level data.

Federal COVID-19 relief funding was distributed to hospitals as part of the Coronavirus Aid, Relief, and Economic Security (CARES) Act. State relief funds were also distributed to hospitals. A portion of this funding was reported as operating revenue. Most of this funding was received and reported in fiscal year 2020 and 2021, but some hospitals received and recognized relief funding through the period ending March 31, 2022.

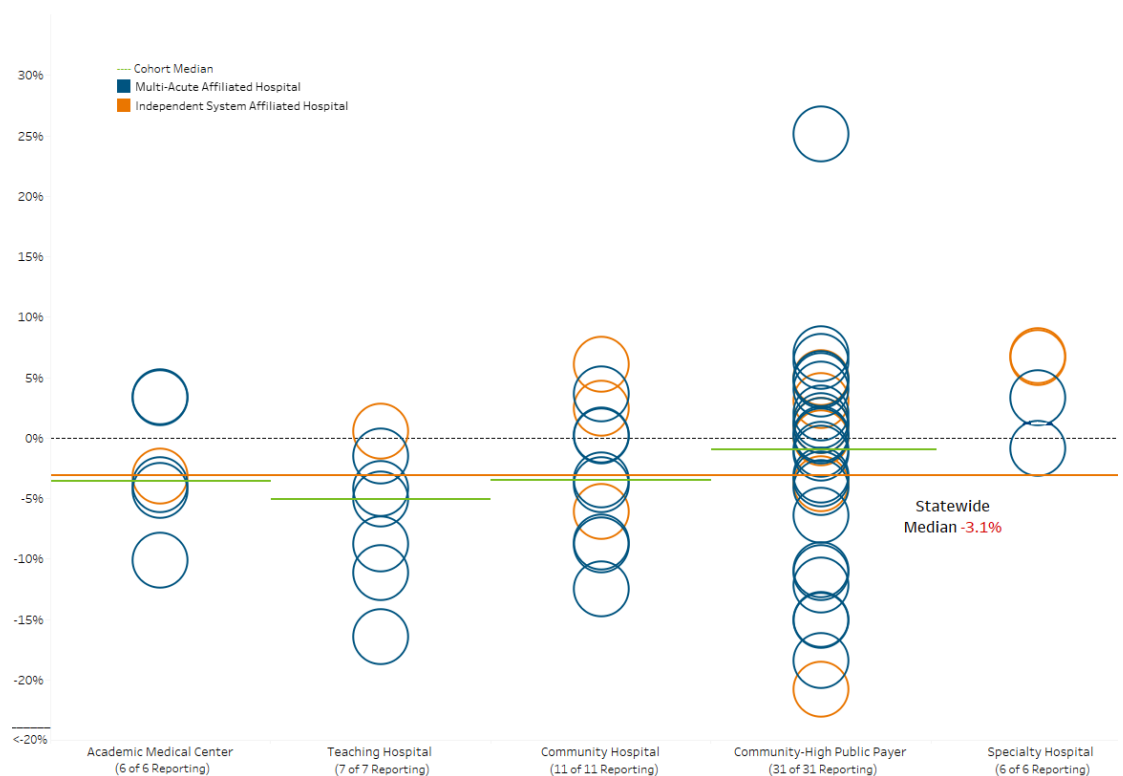
### Key Findings

#### Profitability: Hospitals

Overall acute hospital profitability,<sup>1</sup> as measured by the median total margin, was -3.1%, a decrease of 6.8 percentage points in comparison to the same period in the prior year (figure 2). Of the 61 hospitals, 35 hospitals (57%) reported negative total margins during this time period. Last quarter, 15 of the 49 hospitals reporting (31%) had negative margins.

This report includes second quarter results for most hospitals and may not be indicative of their financial position at fiscal year-end.

Figure 1: Acute Hospital Total Margin by Hospital Type

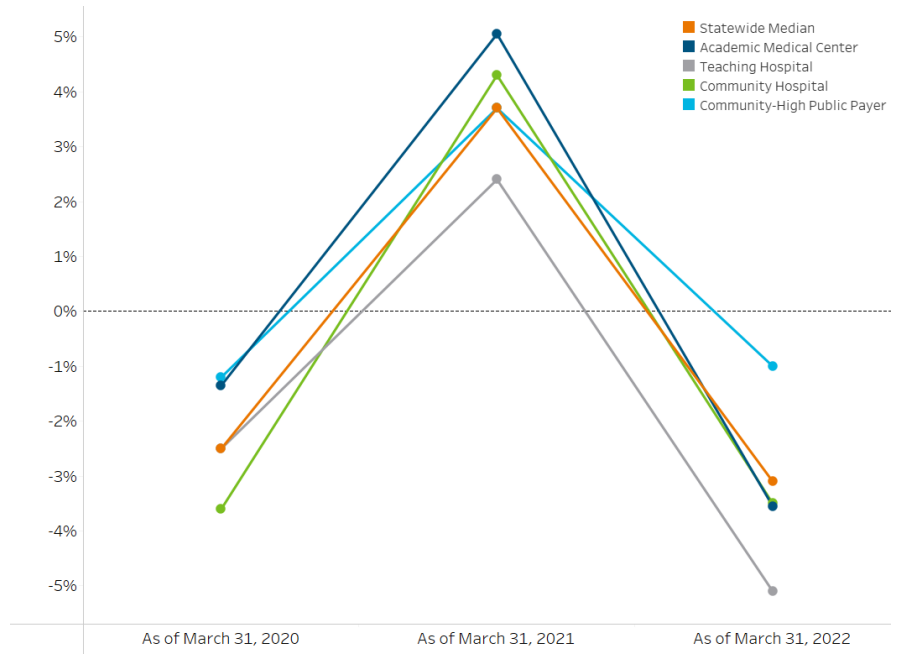


<sup>1</sup> Profitability or profit indicates an excess of revenues over expenses.

**Figure 2: Median Total Margin by Hospital Cohort**

All four cohorts<sup>2</sup> experienced a decrease in profitability when compared to the same period last year. The AMC cohort reported the largest decrease of 8.7 percentage points, while the community-HPP cohort reported the smallest decrease of 4.7 percentage points. In addition, all four cohorts reported a negative total margin during this time period.

In aggregate, hospitals reported \$229 million in federal and state COVID-19 relief funds as operating revenue during the current period. This revenue is included in their total margins.



<sup>2</sup> Acute hospital cohort designations are Academic Medical Center (AMC), Teaching Hospital, Community Hospital, and Community-High Public Payer (HPP). Specialty Hospitals are not considered a cohort. For further descriptions of the cohorts and specialty hospitals, see the technical appendix.

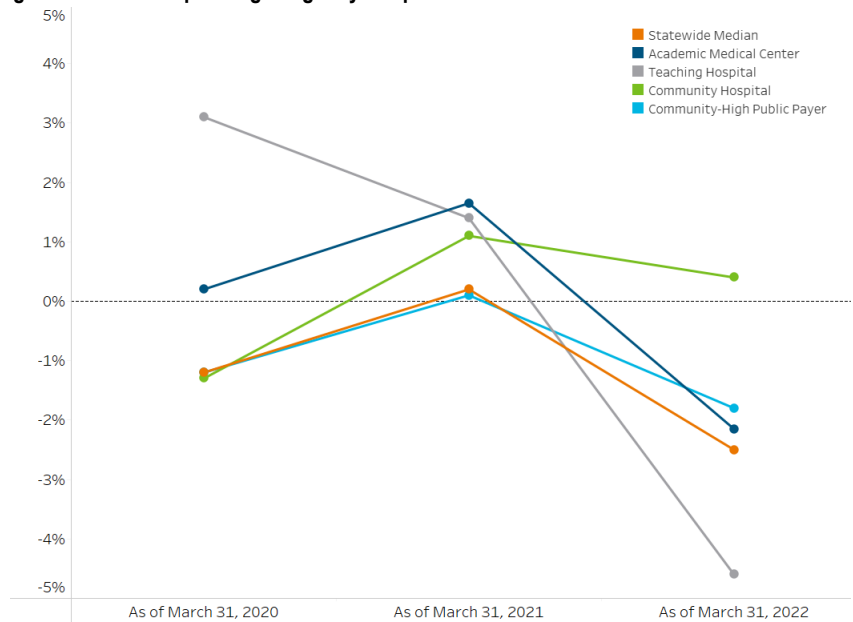
	March 31, 2020	March 31, 2021	March 31, 2022
<b>Statewide Median</b>	<b>-2.5%</b>	<b>3.7%</b>	<b>-3.1%</b>
AMC (6 of 6 Reporting)	-1.4%	5.1%	-3.6%
Teaching Hospital (7 of 7 Reporting)	2.5%	2.4%	-5.1%
Community Hospital (11 of 11 Reporting)	-3.6%	4.3%	-3.5%
Community-HPP (31 of 31 Reporting)	-1.2%	3.7%	-1.0%

**Figure 3: Median Operating Margin by Hospital Cohort**

The statewide median operating margin was -2.5%, a decrease of 2.7 percentage points compared to the same period last year.

All cohorts experienced a decrease in median operating margin. The teaching hospital cohort reported the lowest operating margin of -4.6%.

These margins also include COVID-19 relief funding reported as operating revenue.



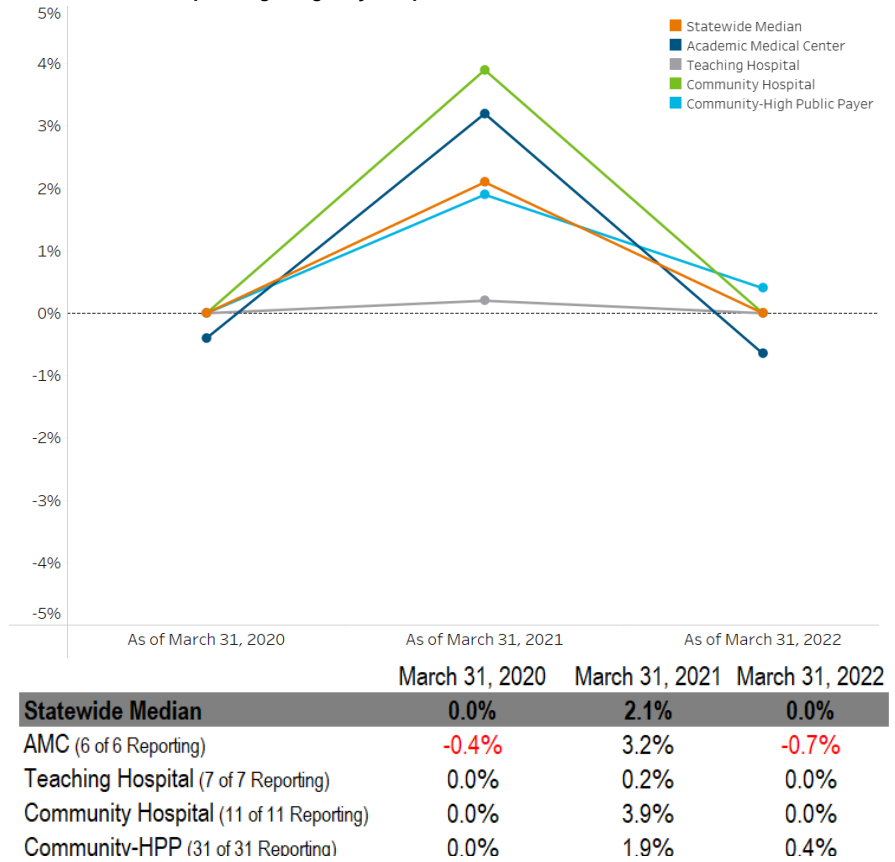
	March 31, 2020	March 31, 2021	March 31, 2022
<b>Statewide Median</b>	<b>-1.2%</b>	<b>0.2%</b>	<b>-2.5%</b>
AMC (6 of 6 Reporting)	0.2%	1.7%	-2.2%
Teaching Hospital (7 of 7 Reporting)	3.1%	1.4%	-4.6%
Community Hospital (11 of 11 Reporting)	-1.3%	1.1%	0.4%
Community-HPP (31 of 31 Reporting)	-1.2%	0.1%	-1.8%

The statewide median non-operating margin was 0.0%, a decrease of 2.1 percentage points compared to the same period last year.

All cohorts saw a decrease in their median non-operating margins compared to the same period last year. The AMC and community hospital cohorts each reported the largest change in median non-operating margin, a decrease of 3.9 percentage points.

Non-operating margins are influenced by changes in the investment markets. Starting in FY 2020, accounting standards required realized and unrealized gains be recognized in financial performance. These results are included in the non-operating margins in this report.

Figure 4: Median Non-Operating Margin by Hospital Cohort



## Revenue and Expenses

Aggregate total operating revenue increased by \$1.3 billion (7.5%) of which aggregate net patient service revenue, the most significant component of operating revenue, increased by \$870 million (6.1%) when compared to the prior year. Aggregate expenses increased \$1.8 billion (10.2%) when compared to the same period in the prior year. For the fiscal year-to-date period through March 31, 2022, expenses exceeded total operating revenue by \$475 million in aggregate.

Through March 31, 2022, hospitals reported \$229 million in COVID-19 relief funds in their operating revenue, as compared to \$209 million in the same period the prior year.

Figure 5: Hospital Operating Revenue and Expenses Trends

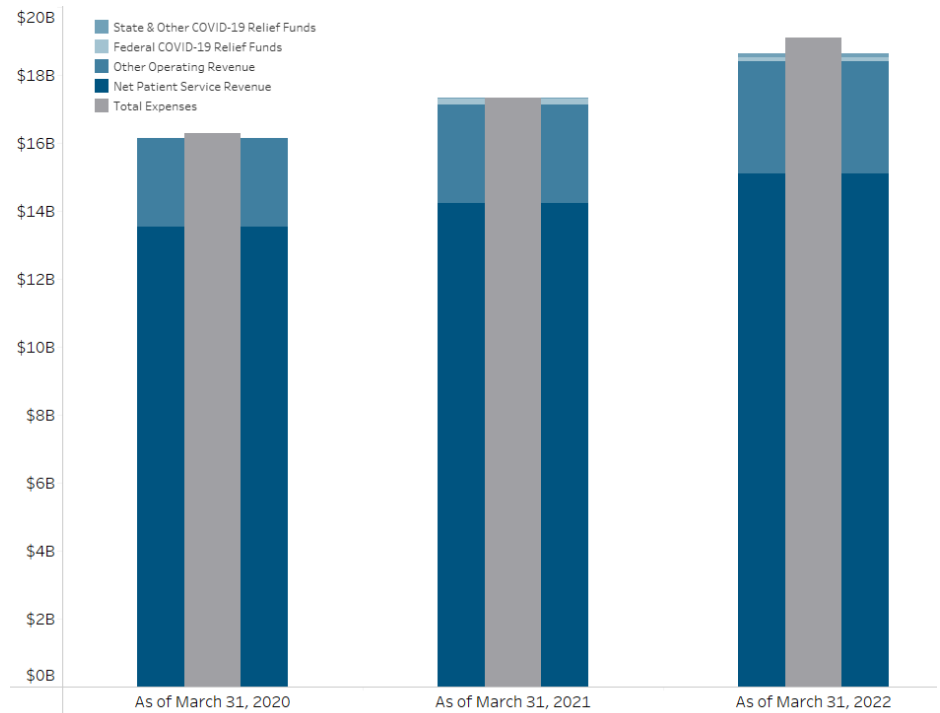
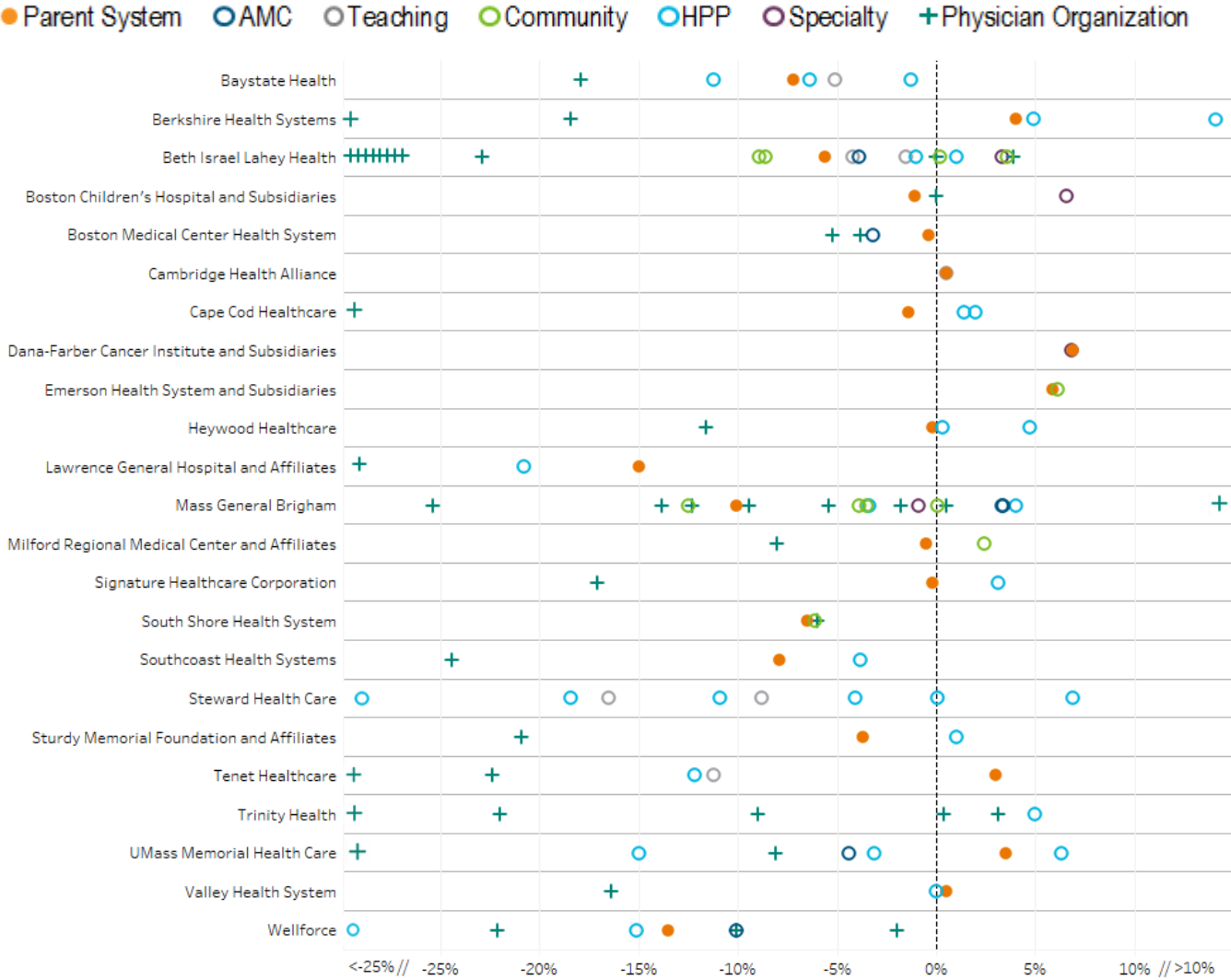


Figure 6: Total Margin of Hospital Health Systems, Acute Hospitals, and Affiliated Physician Organizations



Note: Some entities had margins of <math><-25\%</math> or >math>10\%</math>. In order to display all entities in one graph, there is an axis break at <math>-25\%</math> and <math>10\%</math> to account for those organizations. For more details, see the databook.

**Profitability: Hospital Health Systems and Physician Organizations**

As of March 31, 2022, seven hospital health systems were profitable and reported a positive total margin, while the remaining 15 systems that reported data had negative total margins. For the same period in the prior year, 19 hospital health systems reported positive total margins, while the remaining four systems reported negative total margins. Total margins reported by the hospital health systems were influenced primarily by operating margins during this time period. For most health systems, this data reflects second quarter results and may not be indicative of their final annual financial performance.

Thirty-nine of 45 affiliated physician organizations reported a net loss for the period ending March 31, 2022.

## Hospital Health System

Entity	Organization Type	Months Reported	Operating Margin	Non-Operating Margin	Total Margin	COVID Funding in Operating Revenue <sup>3</sup>	Excess (Deficit) of Revenue over Expenses	Current Ratio	Net Assets
<b>Baystate Health</b>		<b>6</b>	<b>-5.9%</b>	<b>-1.3%</b>	<b>-7.2%</b>	<b>\$36.4</b>	<b>(\$101.6)</b>	<b>1.8</b>	<b>\$1,314.3</b>
Baystate Franklin	Community-High Public Payer Hospital	6	-1.8%	0.5%	-1.3%	\$5.4	(\$0.8)	1.1	\$51.2
Baystate Medical Center	Teaching Hospital	6	-4.6%	-0.5%	-5.1%	\$24.8	(\$39.9)	2.6	\$996.7
Baystate Noble	Community-High Public Payer Hospital	6	-11.2%	0.0%	-11.2%	\$1.2	(\$4.1)	0.9	\$26.6
Baystate Wing	Community-High Public Payer Hospital	6	-6.2%	-0.2%	-6.4%	\$1.7	(\$3.1)	1.1	\$40.1
Baystate Medical Practices	Physician Organization	6	-18.3%	0.4%	-17.9%	\$3.0	(\$36.7)	-	-
<b>Berkshire Health Systems</b>		<b>6</b>	<b>3.5%</b>	<b>0.5%</b>	<b>4.0%</b>	<b>\$16.0</b>	<b>\$15.9</b>	<b>1.7</b>	<b>\$619.1</b>
Berkshire Medical Center	Community-High Public Payer Hospital	6	6.3%	-1.3%	4.9%	\$11.9	\$15.2	1.4	\$539.6
Fairview Hospital	Community-High Public Payer Hospital	6	11.6%	13.5%	25.1%	\$1.8	\$12.2	2.2	\$67.4
Berkshire Faculty Services	Physician Organization	6	-37.1%	0.0%	-37.1%	\$1.5	(\$9.7)	-	-
Berkshire Orthopaedic Associates	Physician Organization	6	-18.4%	0.0%	-18.4%	\$0.5	(\$1.0)	-	-
<b>Beth Israel Lahey Health</b>		<b>6</b>	<b>-4.0%</b>	<b>-1.7%</b>	<b>-5.6%</b>	<b>\$28.3</b>	<b>(\$173.4)</b>	<b>2.4</b>	<b>\$3,381.1</b>
Anna Jaques Hospital	Community Hospital	6	-8.9%	0.0%	-8.9%	\$1.2	(\$6.1)	1.3	\$36.5
Beth Israel Deaconess Hospital - Milton	Community Hospital	6	-8.0%	-0.6%	-8.6%	\$0.6	(\$5.7)	1.4	\$112.7
Beth Israel Deaconess Hospital - Needham	Community Hospital	6	0.4%	-0.2%	0.2%	\$0.4	\$0.1	1.5	\$66.4
Beth Israel Deaconess Hospital - Plymouth	Community-High Public Payer Hospital	6	1.2%	-0.2%	1.0%	\$1.6	\$1.6	1.3	\$134.2
Beth Israel Deaconess Medical Center	Academic Medical Center	6	-2.2%	-1.6%	-3.9%	\$3.5	(\$45.2)	3.3	\$1,253.6
Lahey Hospital and Medical Center	Teaching Hospital	6	-1.1%	-0.4%	-1.5%	\$10.5	(\$8.3)	1.7	\$538.5
Mount Auburn Hospital	Teaching Hospital	6	-3.0%	-1.2%	-4.2%	\$2.5	(\$7.2)	1.7	\$231.5
New England Baptist Hospital	Specialty Hospital	6	4.0%	-0.7%	3.3%	\$0.6	\$3.9	3.5	\$185.6
Northeast Hospital	Community-High Public Payer Hospital	6	-0.4%	-0.7%	-1.0%	\$1.7	(\$2.0)	3.6	\$302.9
Winchester Hospital	Community Hospital	6	2.9%	0.7%	3.6%	\$1.5	\$6.0	4.4	\$366.1
The Affiliated Physicians Group	Physician Organization	6	-22.9%	0.0%	-22.9%	\$0.1	(\$2.2)	-	-
Community Physicians Associates	Physician Organization	6	-73.4%	0.0%	-73.4%	\$0.0	(\$1.5)	-	-
Harvard Medical Faculty Physicians	Physician Organization	6							
Jordan Physicians Associates	Physician Organization	6	-41.6%	0.0%	-41.6%	\$0.8	(\$7.0)	-	-
Lahey Clinic	Physician Organization	6	-28.7%	-0.6%	-29.2%	\$0.5	(\$39.6)	-	-
Lahey Physician Community Org	Physician Organization	6	3.9%	0.0%	3.9%	\$0.2	\$0.2	-	-
Mount Auburn Professional Services	Physician Organization	6	-40.0%	0.0%	-40.0%	\$0.1	(\$17.8)	-	-
New England Baptist Medical Associates	Physician Organization	6	-36.1%	0.0%	-36.1%	\$0.0	(\$1.6)	-	-
Northeast Medical Practice	Physician Organization	6	-55.8%	0.0%	-55.8%	\$0.1	(\$6.9)	-	-
Seacoast Affiliated Group Practice	Physician Organization	6	-28.2%	0.0%	-28.2%	\$0.0	(\$1.8)	-	-
Winchester Physician Association	Physician Organization	6	-27.5%	0.0%	-27.5%	\$0.2	(\$2.4)	-	-
<b>Boston Children's Hospital and Subsidiaries</b>		<b>6</b>	<b>2.7%</b>	<b>-3.8%</b>	<b>-1.1%</b>	<b>\$2.0</b>	<b>(\$17.3)</b>	<b>1.4</b>	<b>\$7,840.2</b>
Boston Children's Hospital	Specialty Hospital	6	2.2%	4.4%	6.6%	\$0.0	\$79.0	6.3	\$5,196.3
Physicians Organization at Children's Hospital and Foundation	Physician Organization	6	3.8%	-3.8%	0.0%	\$4.9	(\$0.0)	-	-
<b>Boston Medical Center Health System</b>		<b>6</b>	<b>0.6%</b>	<b>-1.0%</b>	<b>-0.4%</b>	<b>\$46.2</b>	<b>(\$9.9)</b>	<b>1.6</b>	<b>\$2,040.9</b>
Boston Medical Center	Academic Medical Center	6	-2.1%	-1.1%	-3.2%	\$46.2	(\$31.4)	1.9	\$1,382.0
Boston University Affiliated Physicians	Physician Organization	6	-5.2%	0.0%	-5.2%	\$0.0	(\$0.0)	-	-
BMC Faculty Practice Foundation	Physician Organization	6	-3.7%	0.0%	-3.8%	\$1.0	(\$8.4)	-	-
<b>Cambridge Health Alliance</b>		<b>9</b>	<b>-3.8%</b>	<b>4.3%</b>	<b>0.5%</b>	<b>\$0.0</b>	<b>\$3.0</b>	<b>4.4</b>	<b>\$303.2</b>
Cambridge Health Alliance	Teaching Hospital	9	-3.8%	4.3%	0.5%	\$0.0	\$3.0	4.4	\$303.2
<b>Cape Cod Healthcare</b>		<b>6</b>	<b>-3.4%</b>	<b>1.9%</b>	<b>-1.4%</b>	<b>\$2.6</b>	<b>(\$7.2)</b>	<b>1.3</b>	<b>\$883.8</b>
Cape Cod Hospital	Community-High Public Payer Hospital	6	0.5%	1.5%	2.0%	\$2.0	\$6.2	1.7	\$511.2
Falmouth Hospital	Community-High Public Payer Hospital	6	-1.1%	2.5%	1.4%	\$0.1	\$1.3	0.8	\$243.8
Medical Affiliates of Cape Cod	Physician Organization	6	-31.1%	0.0%	-31.1%	\$0.0	(\$14.3)	-	-
<b>Dana-Farber Cancer Institute and Subsidiaries</b>		<b>6</b>	<b>-6.6%</b>	<b>13.5%</b>	<b>6.9%</b>	<b>\$5.9</b>	<b>\$90.6</b>	<b>1.2</b>	<b>\$3,090.6</b>
Dana-Farber Cancer Institute	Specialty Hospital	6	-6.7%	13.6%	6.8%	\$5.9	\$89.2	1.3	\$3,131.8

Hospital Health System									
Entity	Organization Type	Months Reported	Operating Margin	Non-Operating Margin	Total Margin	COVID Funding in Operating Revenue <sup>3</sup>	Excess (Deficit) of Revenue over Expenses	Current Ratio	Net Assets
<b>Emerson Health System and Subsidiaries</b>		<b>6</b>	<b>4.0%</b>	<b>2.0%</b>	<b>5.9%</b>	<b>\$15.4</b>	<b>\$11.1</b>	<b>1.9</b>	<b>\$107.4</b>
Emerson Hospital	Community Hospital	6	4.3%	1.7%	6.1%	\$13.6	\$11.3	1.9	\$99.5
<b>Heywood Healthcare</b>		<b>6</b>	<b>0.3%</b>	<b>-0.5%</b>	<b>-0.2%</b>	<b>\$0.0</b>	<b>(\$0.2)</b>	<b>1.1</b>	<b>\$81.9</b>
Athol Hospital	Community-High Public Payer Hospital	6	4.7%	0.0%	4.7%	\$0.0	\$0.9	0.7	\$13.0
Heywood Hospital	Community-High Public Payer Hospital	6	1.0%	-0.7%	0.3%	\$0.0	\$0.2	1.1	\$49.1
Heywood Medical Group	Physician Organization	6	-11.6%	0.0%	-11.6%	\$0.0	(\$1.4)	-	-
<b>Lawrence General Hospital and Affiliates</b>		<b>6</b>	<b>-16.8%</b>	<b>1.8%</b>	<b>-15.0%</b>	<b>\$1.4</b>	<b>(\$22.9)</b>	<b>1.2</b>	<b>\$42.9</b>
Lawrence General Hospital	Community-High Public Payer Hospital	6	-15.0%	-5.8%	-20.8%	\$1.4	(\$28.1)	1.1	\$44.9
Community Medical Associates	Physician Organization	6	-93.0%	0.0%	-93.0%	\$0.0	(\$3.6)	-	-
<b>Mass General Brigham</b>		<b>6</b>	<b>-2.4%</b>	<b>-7.6%</b>	<b>-10.1%</b>	<b>\$1.7</b>	<b>(\$761.6)</b>	<b>2.7</b>	<b>\$15,412.9</b>
Brigham & Women's Faulkner Hospital	Community Hospital	6	-3.5%	0.0%	-3.5%	\$0.0	(\$5.6)	0.9	\$85.1
Brigham & Women's Hospital	Academic Medical Center	6	3.3%	-0.1%	3.3%	\$0.0	\$61.5	1.0	\$754.7
Cooley Dickinson Hospital	Community-High Public Payer Hospital	6	4.0%	0.0%	4.0%	\$0.0	\$4.7	0.8	\$48.2
Martha's Vineyard Hospital	Community Hospital	6	2.2%	-6.1%	-3.9%	\$0.3	(\$2.2)	2.3	\$156.4
Massachusetts Eye & Ear Infirmary	Specialty Hospital	6	0.1%	-1.0%	-0.9%	\$0.0	(\$1.5)	1.0	\$15.1
Massachusetts General Hospital	Academic Medical Center	6	3.6%	-0.2%	3.4%	\$0.0	\$86.7	1.0	\$3,495.8
Nantucket Cottage Hospital	Community Hospital	6	-19.5%	6.9%	-12.5%	\$0.3	(\$4.3)	3.5	\$157.2
Newton-Wellesley Hospital	Community Hospital	6	0.6%	-0.5%	0.1%	\$0.0	\$0.4	0.7	\$99.7
North Shore Medical Center	Community-High Public Payer Hospital	6	-3.4%	0.0%	-3.4%	\$0.1	(\$9.1)	0.8	\$255.1
Brigham and Women's Physicians Organization	Physician Organization	6	2.1%	-3.9%	-1.8%	\$0.0	(\$9.8)	-	-
CD Practice Associates	Physician Organization	6	-25.4%	0.0%	-25.4%	\$0.0	(\$8.4)	-	-
Massachusetts Eye and Ear Associates	Physician Organization	6	2.1%	-1.6%	0.5%	\$0.0	\$0.4	-	-
Massachusetts General Hospital Physicians Organization	Physician Organization	6	-1.1%	-4.3%	-5.4%	\$0.0	(\$35.8)	-	-
Nantucket Physician Organization	Physician Organization	6	26.6%	0.0%	26.6%	\$0.0	\$0.1	-	-
Newton-Wellesley Physician Hospital Group	Physician Organization	6	-12.2%	-0.1%	-12.3%	\$0.0	(\$7.0)	-	-
North Shore Physicians Group	Physician Organization	6	-9.4%	0.0%	-9.4%	\$0.0	(\$9.8)	-	-
Partners Community Physician Organization	Physician Organization	6	-10.4%	-3.5%	-13.8%	\$0.0	(\$10.8)	-	-
<b>Milford Regional Medical Center and Affiliates</b>		<b>6</b>	<b>-1.3%</b>	<b>0.8%</b>	<b>-0.5%</b>	<b>\$3.6</b>	<b>(\$1.0)</b>	<b>1.7</b>	<b>\$124.4</b>
Milford Regional Medical Center	Community Hospital	6	1.3%	1.1%	2.4%	\$3.2	\$3.2	2.0	\$121.3
Milford Regional Physician Group	Physician Organization	6	-8.0%	0.0%	-8.0%	\$0.4	(\$4.2)	-	-
<b>Shriners Hospitals for Children</b>		<b>3</b>	<b>-50.5%</b>	<b>48.2%</b>	<b>-2.2%</b>	<b>\$0.0</b>	<b>(\$5.4)</b>	<b>9.5</b>	<b>\$10,743.0</b>
Shriners Hospital for Children - Boston*	Specialty Hospital	3							
Shriners Hospital for Children - Springfield*	Specialty Hospital	3							
<b>Signature Healthcare Corporation</b>		<b>6</b>	<b>-1.4%</b>	<b>1.3%</b>	<b>-0.2%</b>	<b>\$5.1</b>	<b>(\$0.3)</b>	<b>0.9</b>	<b>\$111.1</b>
Signature Healthcare Brockton Hospital	Community-High Public Payer Hospital	6	1.4%	1.7%	3.1%	\$4.8	\$5.7	0.9	\$98.4
Signature Healthcare Medical Group	Physician Organization	6	-17.1%	0.0%	-17.1%	\$0.3	(\$5.8)	-	-
<b>South Shore Health System Inc.</b>		<b>6</b>	<b>-5.9%</b>	<b>-0.7%</b>	<b>-6.5%</b>	<b>\$3.1</b>	<b>(\$28.4)</b>	<b>1.3</b>	<b>\$460.2</b>
South Shore Hospital	Community Hospital	6	-5.7%	-0.4%	-6.1%	\$3.1	(\$23.0)	1.0	\$378.3
Coastal Medical Associates	Physician Organization	6	-6.0%	0.0%	-6.0%	\$0.0	(\$3.4)	-	-
<b>Southcoast Health Systems</b>		<b>6</b>	<b>-6.1%</b>	<b>-1.8%</b>	<b>-7.9%</b>	<b>\$26.3</b>	<b>(\$46.1)</b>	<b>1.1</b>	<b>\$899.6</b>
Southcoast Hospital Group	Community-High Public Payer Hospital	6	-2.5%	-1.3%	-3.8%	\$25.9	(\$17.9)	1.1	\$628.9
Southcoast Physician Group	Physician Organization	6	-24.4%	0.0%	-24.4%	\$0.2	(\$31.8)	-	-
<b>Steward Health Care</b>		Steward Health Care did not submit the required hospital health system data							
Morton Hospital	Community-High Public Payer Hospital	3	-19.7%	1.3%	-18.4%	\$0.0	(\$7.2)	1.2	\$38.1
Nashoba Valley Medical Center	Community-High Public Payer Hospital	3	-17.5%	6.7%	-10.9%	\$0.0	(\$1.9)	1.1	\$7.3
Steward Carney Hospital ε	Teaching Hospital	3	-27.0%	10.5%	-16.5%	\$0.0	(\$5.6)	1.3	\$44.2
Steward Good Samaritan Medical Center	Community-High Public Payer Hospital	3	-0.8%	0.9%	0.1%	\$0.0	\$0.1	1.3	\$51.7
Steward Holy Family Hospital	Community-High Public Payer Hospital	3	-8.5%	4.5%	-4.1%	\$0.0	(\$2.9)	1.3	\$40.9
Steward Norwood Hospital	Community-High Public Payer Hospital	3	-53.4%	20.8%	-32.6%	\$0.0	(\$4.1)	0.1	(\$5.2)
Steward Saint Anne's Hospital	Community-High Public Payer Hospital	3	6.2%	0.7%	6.9%	\$0.0	\$5.7	1.6	\$55.6
Steward St. Elizabeth's Medical Center ε	Teaching Hospital	3	-9.8%	1.1%	-8.8%	\$0.0	(\$9.4)	1.2	\$146.0
Steward Medical Group	Physician Organization	3	Steward Health Care did not submit the required physician organization data						

Hospital Health System									
Entity	Organization Type	Months Reported	Operating Margin	Non-Operating Margin	Total Margin	COVID Funding in Operating Revenue <sup>3</sup>	Excess (Deficit) of Revenue over Expenses	Current Ratio	Net Assets
<b>Sturdy Memorial Foundation and Affiliates</b>		<b>6</b>	<b>-7.6%</b>	<b>4.0%</b>	<b>-3.7%</b>	<b>\$0.0</b>	<b>(\$5.6)</b>	<b>1.3</b>	<b>\$585.6</b>
Sturdy Memorial Hospital	Community-High Public Payer Hospital	6	-4.4%	5.4%	1.0%	\$0.0	\$1.2	1.3	\$516.2
Sturdy Memorial Associates	Physician Organization	6	-20.9%	0.0%	-20.9%	\$0.0	(\$6.3)	-	-
<b>Tenet Healthcare</b>		<b>3</b>	<b>7.0%</b>	<b>-4.0%</b>	<b>3.0%</b>	<b>\$6.0</b>	<b>\$140.0</b>	<b>1.3</b>	<b>\$4,414.0</b>
MetroWest Medical Center	Community-High Public Payer Hospital	3	-12.5%	0.4%	-12.2%	\$0.0	(\$6.3)	0.8	\$28.6
Saint Vincent Hospital $\epsilon$	Teaching Hospital	3	-11.2%	0.0%	-11.2%	\$0.0	(\$11.1)	1.0	\$248.6
Metrowest Physician Services	Physician Organization	3	-22.4%	0.0%	-22.4%	\$0.2	(\$0.6)	-	-
Saint Vincent Medical Company	Physician Organization	3	-52.3%	0.0%	-52.3%	\$0.0	(\$4.3)	-	-
<b>Trinity Health</b> Trinity Health did not submit the required health care system data									
Mercy Medical Center	Community-High Public Payer Hospital	9	4.5%	0.5%	5.0%	\$16.0	\$13.2	1.5	\$212.6
Mercy Inpatient Medical Associates	Physician Organization	9	-55.1%	0.0%	-55.1%	\$0.0	(\$7.1)	-	-
Mercy Medical Group	Physician Organization	9	3.1%	0.0%	3.1%	\$0.0	\$0.2	-	-
Mercy Specialist Physicians	Physician Organization	9	0.4%	0.0%	0.4%	\$0.0	\$0.0	-	-
Pioneer Valley Cardiology Associates	Physician Organization	9	-9.0%	0.0%	-9.0%	\$0.1	(\$1.0)	-	-
Riverbend Medical Group	Physician Organization	9	-22.0%	0.0%	-22.0%	\$2.7	(\$13.0)	-	-
<b>UMass Memorial Health Care</b>		<b>6</b>	<b>-7.4%</b>	<b>10.9%</b>	<b>3.5%</b>	<b>\$13.8</b>	<b>\$64.2</b>	<b>1.5</b>	<b>\$1,534.2</b>
Harrington Hospital <sup>4</sup>	Community-High Public Payer Hospital	6	6.0%	0.3%	6.3%	\$2.2	\$5.3	1.0	\$81.7
HealthAlliance-Clinton Hospital	Community-High Public Payer Hospital	6	-15.7%	0.7%	-15.0%	\$0.5	(\$16.2)	0.9	\$161.1
Marlborough Hospital	Community-High Public Payer Hospital	6	-3.7%	0.7%	-3.1%	\$0.2	(\$1.7)	1.3	\$56.1
UMass Memorial Medical Center $\epsilon$	Academic Medical Center	6	-5.1%	0.6%	-4.4%	\$4.0	(\$49.1)	1.0	\$412.7
Harrington Physician Services	Physician Organization	6	-38.3%	0.0%	-38.3%	\$0.1	(\$4.8)	-	-
UMass Memorial Medical Group Inc.	Physician Organization	6	-8.0%	-0.1%	-8.1%	\$0.5	(\$26.0)	-	-
<b>Valley Health System</b>		<b>6</b>	<b>1.1%</b>	<b>-0.6%</b>	<b>0.5%</b>	<b>\$2.1</b>	<b>\$0.6</b>	<b>1.4</b>	<b>\$23.7</b>
Holyoke Medical Center	Community-High Public Payer Hospital	6	0.9%	-0.9%	0.0%	\$2.1	\$0.0	1.3	\$10.8
Western Mass Physician Associates	Physician Organization	6	-16.4%	0.0%	-16.4%	\$0.0	(\$0.6)	-	-
<b>Welforce</b>		<b>6</b>	<b>-10.8%</b>	<b>-2.7%</b>	<b>-13.5%</b>	<b>\$33.5</b>	<b>(\$153.7)</b>	<b>0.9</b>	<b>\$822.3</b>
Lowell General Hospital	Community-High Public Payer Hospital	6	-14.0%	-1.1%	-15.1%	\$8.7	(\$37.9)	0.9	\$119.5
MelroseWakefield Health	Community-High Public Payer Hospital	6	-24.1%	-6.2%	-30.4%	\$3.7	(\$34.7)	0.9	\$189.6
Tufts Medical Center	Academic Medical Center	6	-7.4%	-2.7%	-10.1%	\$14.5	(\$54.4)	1.2	\$317.8
Circle Health Physicians	Physician Organization	6	-10.1%	0.0%	-10.1%	\$0.1	(\$3.7)	-	-
Hallmark Health Medical Associates	Physician Organization	6	-22.1%	0.0%	-22.1%	\$1.5	(\$5.7)	-	-
Tufts Medical Center Physician Organization	Physician Organization	6	-2.0%	0.0%	-2.0%	\$3.5	(\$3.5)	-	-

All dollar values are in millions.

<sup>3</sup> Sum of amounts reported as Other Operating Revenue: Federal COVID-19 Relief Funds and Other Operating Revenue: State & Other COVID-19 Relief Funds. This value does not include COVID-19 relief funds reported on other line items.

<sup>4</sup> Harrington Hospital and Harrington Physician Services became part of UMass Memorial Health Care in July 2021.

$\epsilon$  Indicates a hospital meets the High Public Payer threshold.

- Indicates current ratio and net assets are not collected from the physician organization.

\*Shriners Hospital Boston (SHB) and Shriners Hospital Springfield (SHS) are part of the national Shriners Hospitals for Children system (SHC) and are reliant upon support from the SHC endowment to cover the costs associated with fulfilling their mission to provide care to patients regardless of their ability to pay. This support is provided through transfers from the SHC's endowment to the hospitals, as these transfers are not considered revenue for the purpose of calculating profitability margin, SHB's and SHS's profitability margins are not comparable to other acute hospitals. Therefore, they have been excluded from the graphics but are included in the statewide median and the databook.

## REPORT NOTES

### Description of Financial Metrics

Financial ratio analysis is one critical component of assessing an entity's financial condition. As part of this quarterly financial performance report, the Center for Health Information and Analysis (CHIA) collects data and reports on profitability, liquidity, and solvency metrics. The measures are used for hospitals and hospital health systems. The physician organizations only report on profitability metrics. Below are the descriptions and calculations for each.

#### Operating Margin

Operating income is income from normal operations of an entity, including patient care and other activities, such as research, gift shops, parking, and cafeteria, minus the expenses associated with such activities. Operating margin is a critical ratio that measures how profitable the entity is when looking at the performance of its primary activities.

Of note, some federal and state COVID-19 relief funds received may be included in the entity's operating income.

Operating Margin = (Total Operating Revenue - Total Expenses Including Nonrecurring Gains Losses) / Total Unrestricted Revenue, Gains, and Other Support

#### Non-Operating Margin

Non-operating income or loss is net of expenses and includes items that are not related to operations, such as investment income, contributions, gains from the sale of assets, and other unrelated business activities.

Non-Operating Margin = Total Non-Operating Revenue / Total Unrestricted Revenue, Gains, and Other Support

#### Total Margin

This ratio evaluates the overall profitability of the entity using both operating surplus (or loss) and non-operating surplus (or loss).

Total Margin = Total Excess of Revenue, Gains, and Other Support Over Expenses / Total Unrestricted Revenue, Gains, and Other Support

#### COVID Funding in Operating Revenue

This metric sums all sources of COVID-19 relief funding that was recorded as other operating revenue in the financial statements during this reporting period. This may include COVID-19 relief funding received under the CARES Act, HHS public health and social service emergency funds, private foundation grants or contributions, or state relief funds.

COVID Funding in Operating Revenue = Other Operating Revenue: Federal COVID-19 Relief Funds + Other Operating Revenue: State & Other COVID-19 Relief Funds

#### Current Ratio

This ratio measures an entity's ability to meet its current liabilities with its current assets. A ratio of 1.0 or higher indicates that current liabilities could be adequately covered by the entity's existing current assets.

Current Ratio = Total Current Assets / Total Current Liabilities



## Other Measures

The following are individual line items from the hospital and health system standardized financial filing:

- **Total Excess of Revenue, Gains, and Other Support Over Expenses:** Total dollar amount of surplus or loss derived from all operating and non-operating activities
- **Net Patient Service Revenue (NPSR):** Revenue an entity would expect to collect for services provided, including premium revenue, less contractual allowances. NPSR is the primary source of revenue for an entity.
- **Other Operating Revenue: Federal COVID-19 Relief Funds:** Revenue an entity received from the federal government related to the COVID-19 pandemic and reported as operating revenue.
- **Other Operating Revenue: State & Other COVID-19 Relief Funds:** Revenue an entity received from the state government or source other than the federal government related to the COVID-19 pandemic and reported as operating revenue.
- **Net Assets:** For not-for-profit entities, this represents the difference between the assets and liabilities of an entity, comprised of retained earnings from operations and contributions from donors. Changes from year to year are attributable to two major categories: (1) increases and/or decreases in Unrestricted Net Assets, which are affected by operations, and (2) changes in Restricted Net Assets (restricted contributions). The for-profit equivalent of Total Net Assets is Owner's Equity.

## Data Caveats

Data represents the period through March 31, 2022 and is not necessarily an indication of the financial position that an entity will have at its fiscal year end.

Effective July 1, 2021, Harrington Healthcare System became part of with UMass Memorial Healthcare. The FY22 data for UMass Memorial Healthcare includes both the Harrington Memorial Hospital and Harrington Physician Services.

All COVID Funding metrics are presented as reported by the hospital or entity.

There was an accounting change (ASU 2016-01) adopted by most hospitals beginning in FY 2020 in which unrealized gains and losses on investments are recognized as non-operating income.

### CENTER FOR HEALTH INFORMATION AND ANALYSIS

501 Boylston Street, Boston, MA 02116

617. 701. 8100 | [www.chiamass.gov](http://www.chiamass.gov)

Publication Number 22-151-CHIA-01