

Massachusetts All-Payer Claims Database: Technical Assistance Group (TAG)

October 14, 2014



center
for health
information
and analysis

Agenda

- Housekeeping Items
- Data Intake/APCD Submission Guide Ver 4.0
- Risk Adjustment Topics
- Questions

Housekeeping Items

- Substance Abuse Survey
- Profile Reports
- Pharmacy Versioning
- Mandated Benefit Review

Submission Guide Version 4.0

File Type	Data Element/Change	Agency Requiring	Notes
PR	New field – Situs (where account is based)	DOI	ADDED PR019
PC	Update Look Up Table for Drug Unit of Measure (PC075)	Carriers	ADDED: <ul style="list-style-type: none"> • Mg Milligram • MEQ Milliequivalent • MM Millimeter • UG Microgram • UN Unit
ME	Make Member PCP ID (ME 046) an A2 category	CHIA	ADDED*
ME	Require Attributed PCP Provider ID (ME124) from all medical carriers, not just TME carriers	CHIA	ADDED
ME	Make Purchased Thru MA Exchange (ME045) to an A category	Connector	ADDED
ME	Confirm member address fields are residential and not billing	DOI	ADDED Clarifying language

Submission Guide Version 4.0

File Type	Data Element/Change	Agency Requiring	Notes
MC,PC,DC,ME,	Advice on how to code SCOs	DOI	ADDED APCD ID CODE on MC,DC,PC,ME 6 – ICO or SCO
MC,PC,DC	Make Select NPI fields an A category	CHIA (MDM)	ADDED
MC,PC,DC	New flag for consideration – Paid Flag (Yes / No)	Carriers	ADDED
MC	Update Look up Table for State Medicare Code (MC130)	Carriers	ADDED: 7 - CPT Level III Code
MC	Benefit Plan ID on MC	Connector	ADDED
MC	Plan Rendering NPI on MC	CHIA (MDM)	ADDED
MC	Type of Facility for POA Reporting on MC	Carriers	ADDED
MC	Supplemental Diagnoses for Risk Adjustment	Carriers	ADDED

Submission Guide Version 4.0

File Type	Data Element/Change	Agency Requiring	Notes
MC	Adjust inpatient edits from: Required when MC094 = 002 and MC039 is populated” to: “Required when MC094 = 002 and MC036 = 11, 18, 21, 28, 41, 65, 66, 84, 86 or 89 (type of bill indicates an inpatient visit)”	Carriers	ADDED
BP	Benefit Plan Start/End Dates on BP	Connector	ADDED
	New field – County for Medicare Advantage Premium	DOI	TBD
	Add additional “spans” for more attributes, notably address	DOI	TBD
	New fields for MassHealth Enrollment Categories	Several	TBD

Submission Guide Version 4.0

Additional minor updates:

- Submit “null” values for selected B and C fields (ex. PV048 EMR Vendor)
- Wording/clarifications
- Additions of items already in effect (ex. RACP Flag and Billable Member Updates)
- Edit/Condition updates from carriers

Submission Guide Version 4.0

FOOD FOR THOUGHT FOR DEVELOPMENT TEAM:

RECOMMENDATION: Version 4 will go into effect on May 1, 2015 and as of that date Version 3 is no longer active. This means all submissions/resubmissions for October 2013 onward must adhere to the version 4 specifications and edits.

ALTERNATIVE: Version 4 would start at a certain submission year month (201504 due in May) and as of that month all months going forward are only acceptable in Version 4 format and edits.

Resubmissions of Version 3: 201310 – 201503 would be required to be in Version 3 format and edits.

Version 4.0 Submission Guide

Tentative Timeframe

- October 14 – Draft Guides Published
- October 21 – Special TAG to review guides
- October (TBD) – Admin Bulletin
- November 18 – Technical Advisory Group
- May 2015 – targeted implementation (6 months)

Risk Adjustment

- Q3 Simulation Meetings
- Supplemental Diagnoses
- Important Risk Adjustment Fields
- Monthly Member Month Reports

RA Q3 Simulation Meetings

October 24th – Meeting hosted by the Connector

Individual Carrier Meetings:

At Carrier Request

MA APCD Bi-Weekly Schedule

RA Supplemental Diagnoses

Responses to Draft Proposal Due: October 17, 2014

Process:

1. Must follow all rules for a claim line submission to the MA
APCD – all formatting and edits

2. Utilize the MC080 Payment Reason field:

SUPPADD	A supplemental diagnosis has been added
SUPPDELETE	A supplemental diagnosis has been deleted

RA Fields

Data Element	FIELD	Data Element	FIELD
OrgID		Payer Claim Control Number	MC004
Member Gender	ME013	Line Counter	MC005
Member Date of Birth (for age)	ME014	Admission/Discharge Dates	
Member Zip Code	ME017	Service Provider Specialty	MC032
Market Category Code	ME030	Type of Bill	MC036
Last Activity Date	ME056	Site of Service	MC037
Actuarial Value	ME120	Claim Status	MC038
Metal Level	ME121	All Diagnosis fields	
Risk Adjustment Covered Plan (RACP)	ME126	Revenue Code	MC054
Billable Member	ME127	All Procedure Code fields	
Benefit Plan Contract ID	ME128	Procedure Modifiers	
Member Benefit Plan Contract Enrollment Dates	ME129	Dates of Service	
Total Monthly Premium	ME132	Amount/Dollar fields	
CarrierSpecificUniqueMemberID	ME107	Capitated Encounter Flag	MC081
CarrierSpecificUniqueSubscriberID	ME117	Paid Date	MC089
		Claim Processed Date	MC110
All Fields in the Benefit Plan Control Total File		Denied Flag	MC123
		CarrierSpecificUniqueMemberID	MC137
		Claim Line Type	MC138
		CarrierSpecificUniqueMemberID	MC137
		Claim Line Type	MC138

RA Fields

RACP FLAG – ME126

ME126 = 1 or 3 determines who is in the simulation

ME126 = 1 determines who is in the final calculation

CommCare should always be ME126 = 3

Premium – ME132

Required for next quarterly simulation run

RA Fields

Last Activity Date – ME056

Required to determine last iteration of eligibility as well as timing of changes in premium

Actuarial Value – ME120

Must be accurate

ME120 = 0 will not be included in the Risk Adjustment

Metal Level – ME121

Must be appropriate for Actuarial Value

Member Month Tracking

Member Month Tracker Report Template - [INSERT CARRIER NAME]

NOTE - The Member Month Tracker Report may not tie out to the Connector's Risk Simulation Report for the following reasons:

1. Two-Thirds of CommCare members are randomly dropped from the Risk Simulation Report, while all CommCare members are included in the Member Month Tracker Report
2. 0-3% of de-duped member months may not tie out due to random selection
3. Plans were placed in their respective metallic tier by Actuarial Value (MEI20) in the Risk Simulation Report, but were placed by Metal Level (MEI21) in the Member Month Tracker Report

*Benefit Plan IDs with Yellow Highlights have Out of Range Actuarial Values for their coded Metal Level in APCD

June, 2014		MEMBER MONTHS				CommCare Plans			Commercial Plans																										
		All Metal Level, Merged Market				Individual - Silver CSR			Platinum				Gold				Silver Non CSR				Bronze				Catastrophic										
OrgID	Benefit Plan ID	Total Subscriber MMS	Total Billable MMS	Total Member MMS	Total Premium Collected	Total Subscriber MMS	Total Billable MMS	Total MMS	Total Subscriber MMS	Total Billable MMS	Total Member MMS	Total Premium Collected	Total Subscriber MMS	Total Billable MMS	Total Member MMS	Total Premium Collected	Total Subscriber MMS	Total Billable MMS	Total Member MMS	Total Premium Collected	Total Subscriber MMS	Total Billable MMS	Total Member MMS	Total Premium Collected	Total Subscriber MMS	Total Billable MMS	Total Member MMS	Total Premium Collected							
xxx	CN100																																		
xxx	CN210																																		
xxx	A																																		
xxx	B																																		
xxx	C																																		
xxx	D																																		
xxx	E																																		
xxx	F																																		
xxx	G																																		
xxx	H																																		
xxx	U																																		
xxx	J																																		
xxx	K																																		
xxx	L																																		
xxx	M																																		
xxx	N								Benefit Plan ID has Zero AV and Zero Metal Level																										
xxx	O								Benefit Plan ID has Zero AV and Zero Metal Level																										
	Total:																																		

Member Month Methodology

Data was extracted from the APCD by the following criteria:

Data Element	Element Name	Element Constraint
ME126	Risk Adjustment Covered Plan	Equal to 1 or 3
ME129	Member Benefit Plan Contract Enrollment Start Date	NULL or Less Than or Equal To the 15th of the Month
ME130	Member Benefit Plan Contract Enrollment End Date	NULL or Greater Than or Equal To the 15th of the Month

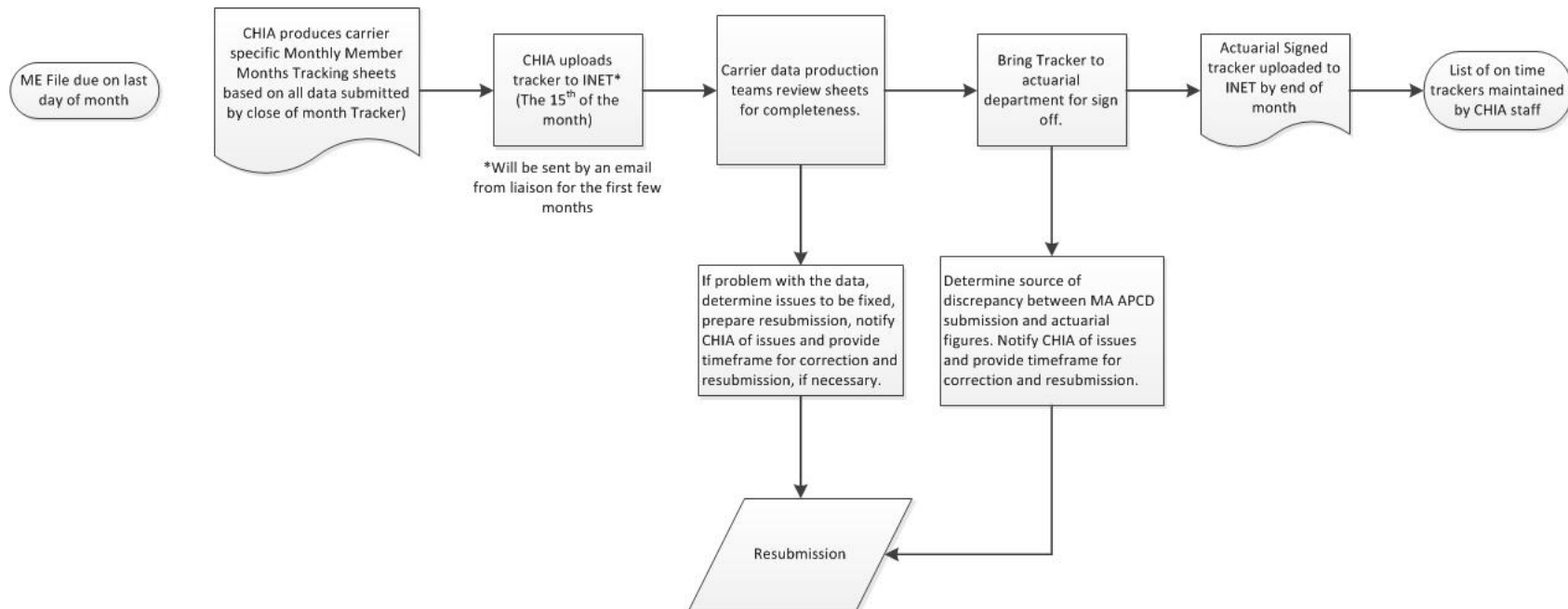
Data was sorted by the following order**:

Sort Order	Data Element	Element Name	Sequence
1	ME001	OrgID	ASCENDING
2	ME128	Benefit Plan Contract ID	ASCENDING
3	ME107	Carrier Specific Unique Member ID	ASCENDING
4	ME056	Last Activity Date	DESCENDING
5	ME018	Medical Coverage	ASCENDING
6	ME028	Primary Insurance Indicator	ASCENDING
7	ME029	Coverage Type	DESCENDING
8	Derived Element	Member Eligibility ID	DESCENDING

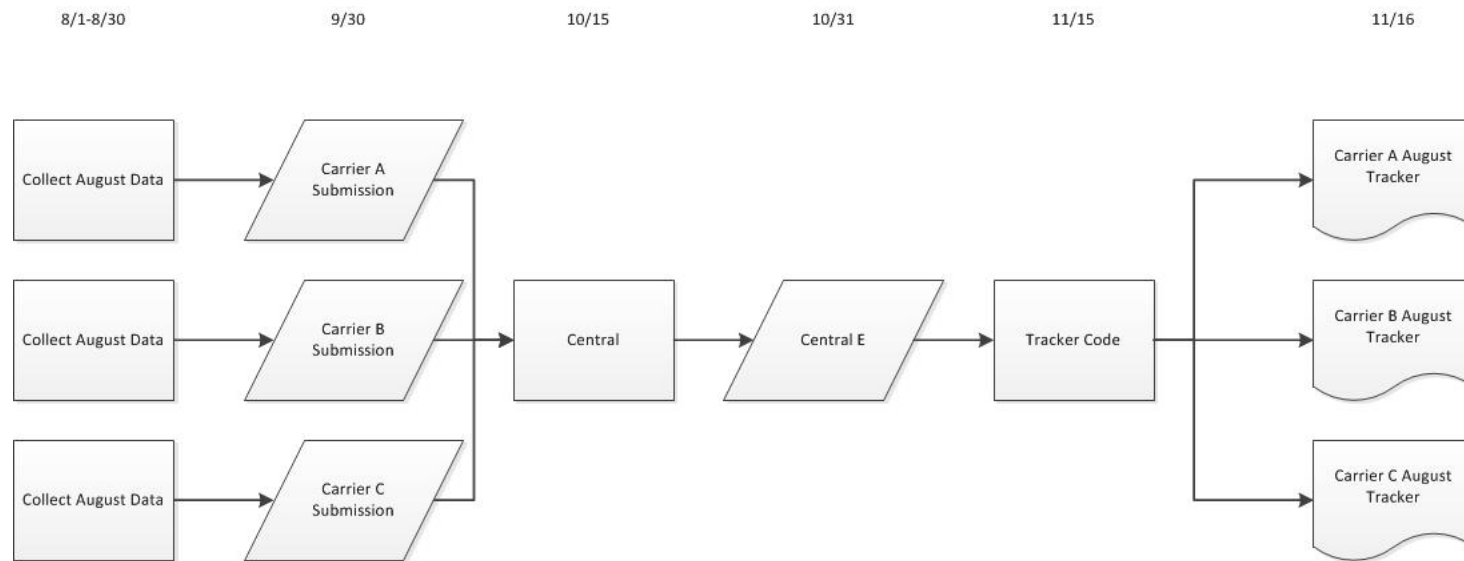
Member Months were de-duped on these fields

**Duplicate member months on other fields (i.e. Premium) were randomly de-duped based on the sort order

Member Month Validation Workflow



Member Month Validation Workflow (continued)



Upcoming Events

- October – Connector RA Simulation Review
- October – Substance Abuse Study
- October – TAG on MA APCD Version 4 Review
- October - MA APCD Version 4 Administrative Bulletin
- November – TAG
- December – MA APCD Data Release

QUESTIONS?

Next Meetings

November 18, 2014 at 2:00pm*

*NOTE – off a week

December 9, 2014 at 2:00 pm