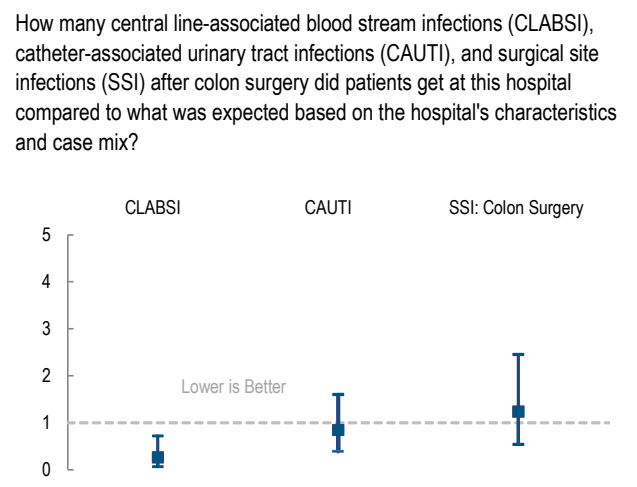
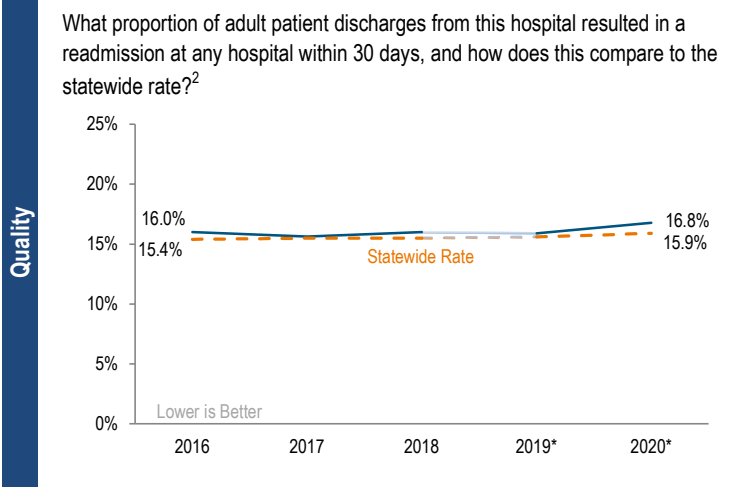
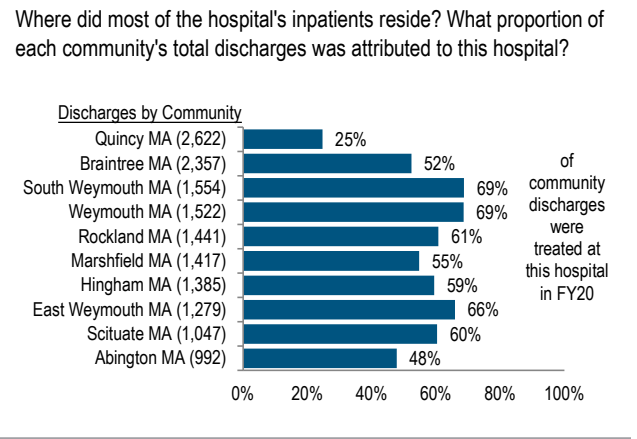
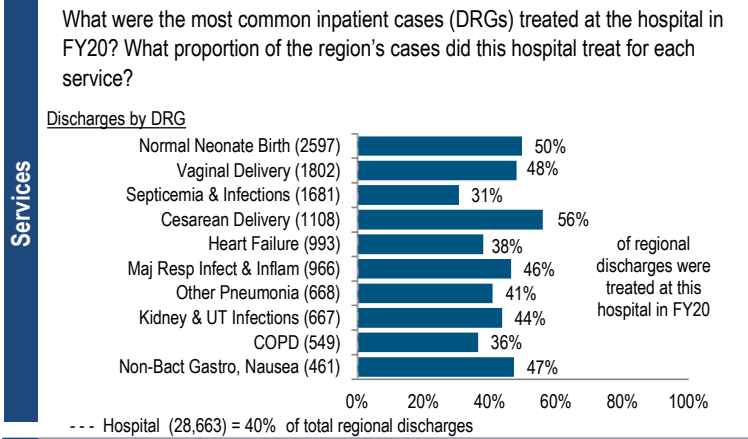


South Shore Hospital is a large, non-profit community hospital located in the Metro South region. Between FY16 and FY20, the volume of inpatient discharges at the hospital remained the same compared to a median decrease of 3.2% at cohort hospitals. Outpatient visits increased by 37.9% for the hospital between FY16 and FY20, compared to a median decrease of 6.8% for its peer cohort. South Shore Hospital reported a profit each year in this time period including a profit of \$25.1M in FY20 and a total margin of 3.5%, compared to the cohort median of 1.4%.

<b>At a Glance</b>	<b>Overview / Size</b>		<b>Payer Mix</b>	
	Hospital System Affiliation:	South Shore Health System	Public Payer Mix <sup>1</sup> :	61.0% non-HPP Hospital
	Hospital System Surplus (Deficit) in FY20:	\$21,044,967	CY19 Commercial Statewide Relative Price:	1.069
	Change in Ownership (FY16-20):	Not Applicable	Top 3 Commercial Payers:	Blue Cross Blue Shield Harvard Pilgrim Tufts HMO
	Total Staffed Beds:	455, 7th largest acute hospital		
	% Occupancy:	75.9%, > cohort avg. (58%)		
	Trauma Center Designation:	Adult: Level 2		
	Case Mix Index:	1.04, > cohort avg. (0.89); < statewide (1.16)		
	<b>Financial</b>		<b>Utilization</b>	
	Inpatient NPSR per CMAD:	\$11,155	Inpatient Discharges in FY20:	28,663
Change FY19-FY20:	-1.3%	Change FY19-FY20:	-5.9%	
Inpatient Outpatient Revenue in FY20:	44%:56%	Emergency Department Visits in FY20:	57,607	
Outpatient Revenue in FY20:	\$267,074,418	Change FY19-FY20:	-15.1%	
Change FY19-FY20:	-7.1%	Outpatient Visits in FY20:	453,733	
Total Revenue in FY20:	\$710,094,055	Change FY19-FY20:	-3.8%	
COVID Funding Included in Total Revenue:	\$38,015,218			
Total Surplus (Deficit) in FY20:	\$25,070,535	<b>Quality</b>		
		Readmission Rate in FY20:	16.8%	
		Change FY19-FY20 (percentage points):	0.9	
		Early Elective Deliveries Rate:	0.7%	



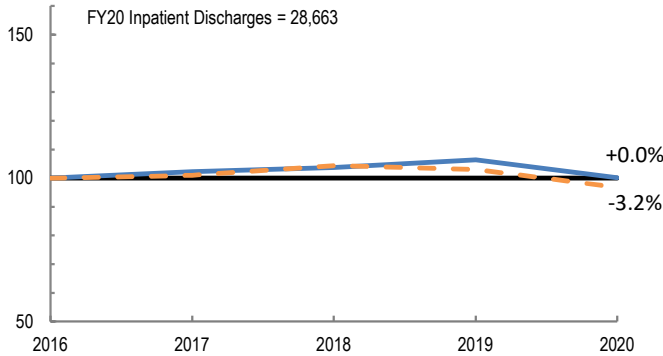
# 2020 HOSPITAL PROFILE: SOUTH SHORE HOSPITAL

Cohort: Community Hospital

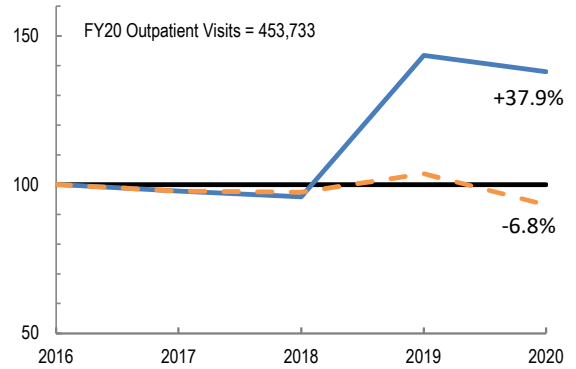


## Utilization

How has the volume of the hospital's inpatient discharges changed compared to FY16, and how does this compare to the hospital's peer cohort median? (FY16=100)

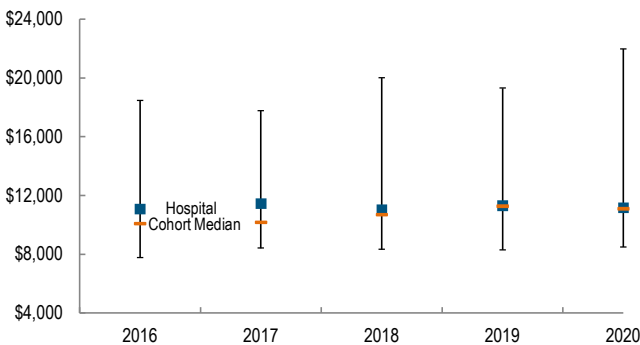


How has the volume of the hospital's outpatient visits changed compared to FY16, and how does this compare to the hospital's peer cohort median? (FY16=100)

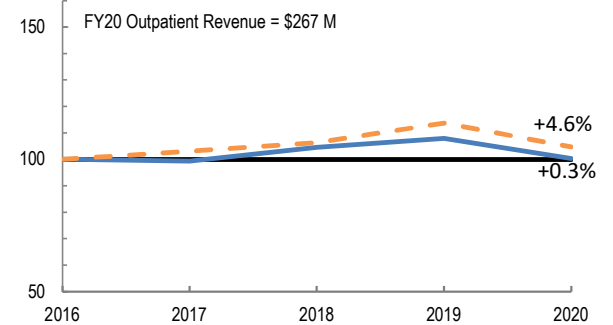


## Patient Revenue Trends

What was the hospital's net inpatient service revenue<sup>3</sup> per case mix adjusted discharge between FY16 and FY20, and how does this compare to the hospital's peer cohort median?



How has the hospital's net outpatient revenue<sup>3</sup> changed compared to FY16, and how does this compare to the hospital's peer cohort median? (FY16=100)



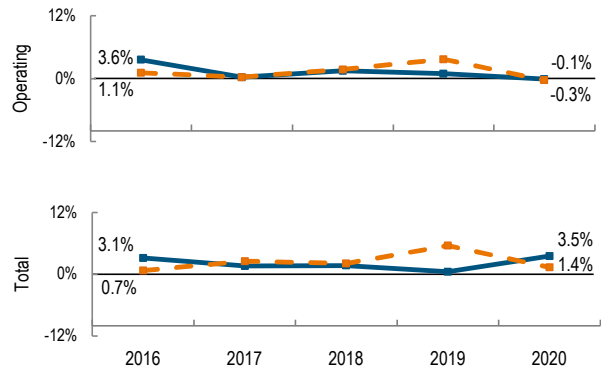
## Financial Performance

How have the hospital's total revenue and costs changed between FY16 and FY20? (COVID funding affects FY20 only)

### Revenue, Cost, & Profit/Loss (in millions)

FY	2016	2017	2018	2019	2020
<b>Operating Revenue</b>	\$ 573.3	\$ 594.3	\$ 615.3	\$ 653.0	\$ 684.1
<b>COVID Funding Included in Operating Revenue</b>					\$ 38.0
<b>Non-Operating Revenue<sup>4</sup></b>	\$ (3.2)	\$ 7.8	\$ 1.5	\$ (2.2)	\$ 26.0
<b>Total Revenue</b>	\$ 570.1	\$ 602.1	\$ 616.8	\$ 650.9	\$ 710.1
<b>Total Costs</b>	\$ 552.7	\$ 592.4	\$ 606.1	\$ 647.3	\$ 685.0
<b>Total Profit (Loss)</b>	\$ 17.5	\$ 9.6	\$ 10.7	\$ 3.6	\$ 25.1

What were the hospital's total margin and operating margins between FY16 and FY20, and how do these compare to the hospital's peer cohort medians? (Note: FY20 margins include COVID funding)



For descriptions of the metrics, please see the technical appendix.

<sup>1</sup> High Public Payer Hospitals (HPP) reported a minimum of 63% of gross patient service revenue from public payers.

<sup>2</sup> For 2019 and 2020 readmission rates, a new methodology was used. These rates may not be comparable to earlier years. For more information, please see: <https://www.chiamass.gov/assets/docs/r/pubs/2022/Readmissions-Technical-Appendix-2011-2020.pdf>

<sup>3</sup> Effective FY 2020 supplemental revenue is not included in net patient service revenue for all hospitals. Prior to FY 2020, reporting of supplemental revenue varied by hospital.

<sup>4</sup> There was an accounting change adopted by most hospitals beginning in FY 2020 in which unrealized gains and losses on investments are now recognized as non-operating income