

# CHIA DATA ASSETS

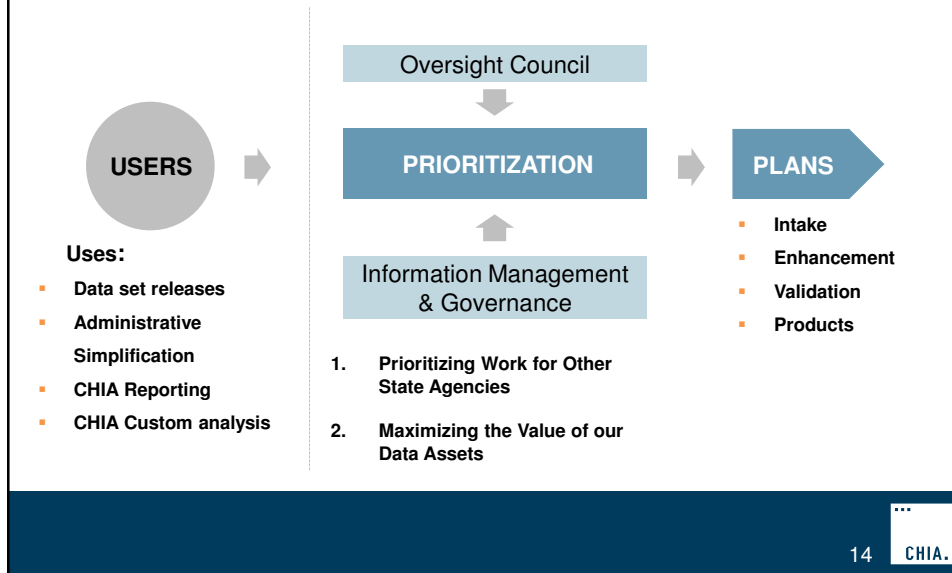
## OVERVIEW & OUTLOOK



### CHIA's Five Categories of Data Assets

- 1. MA All Payer Claims Database**
- 2. Case Mix**
  - Hospital Discharges, ED, and Observation Stays
- 3. Hospitals, RPOs, Primary Care Practices, and Other Providers**
  - Financial Data and Cost Reports
  - Total Medical Expenses and Relative Price
  - Quality Measures
- 4. Health Insurance, Insurers, and Contracting**
  - Alternative Payments Methods
  - Premiums
  - Total Medical Expenses
- 5. Survey Data**
  - Massachusetts Household Insurance Survey (MHIS)
  - Massachusetts Employer Survey (MES)

## A multi-stakeholder process informs investments in CHIA's data assets



## MA APCD: Target improvements to build a shared resource for many, varied users

1. Pursue Administrative Simplification priorities with DOI, GIC
2. Improve the usability of the data through
  - Enhancement
  - Business Layers
  - Documentation
  - Process Improvement
3. Simplify the data collection to shrink regulatory burden

## Case Mix: Identify opportunities to improve the value of the agency's workhorse

1. Expanding data collection to behavioral health hospitals
2. Evaluate value and investment required for other enhancements

## Insurer and Provider: Targeted enhancements and investing in operational excellence

- **Targeted changes to specifications**
  - Based on priorities of HPC, AGO
- **Integrating MA APCD with TME**
  - Evaluating opportunities for administrative simplification
- **Establishing RPO Program**
  - Data Collection, Validation, and Analysis Activities
- **Improving data intake infrastructure and management**

## Surveys

- **Completed review in 2015; implementing recommendations on survey design and content**
- **Vetting a revised schedule over the next 3 months:**
  - MA Household Insurance Survey (MHIS)
  - MA Employer Survey (MES)